

# Configure your device

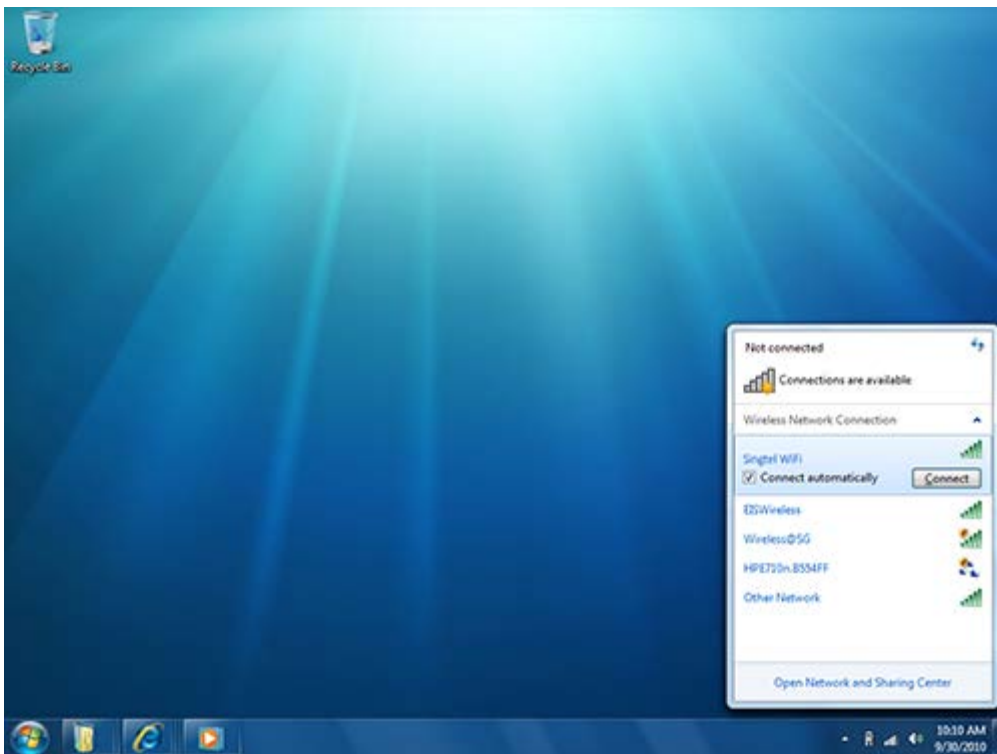
A one-time device configuration will be required when you are at any of our hotspot locations. To begin, select the operating system of your device.

Windows 7 .....	1
Windows 10 .....	3
Mac OS .....	5
iOS .....	7
Android .....	9

## Windows 7

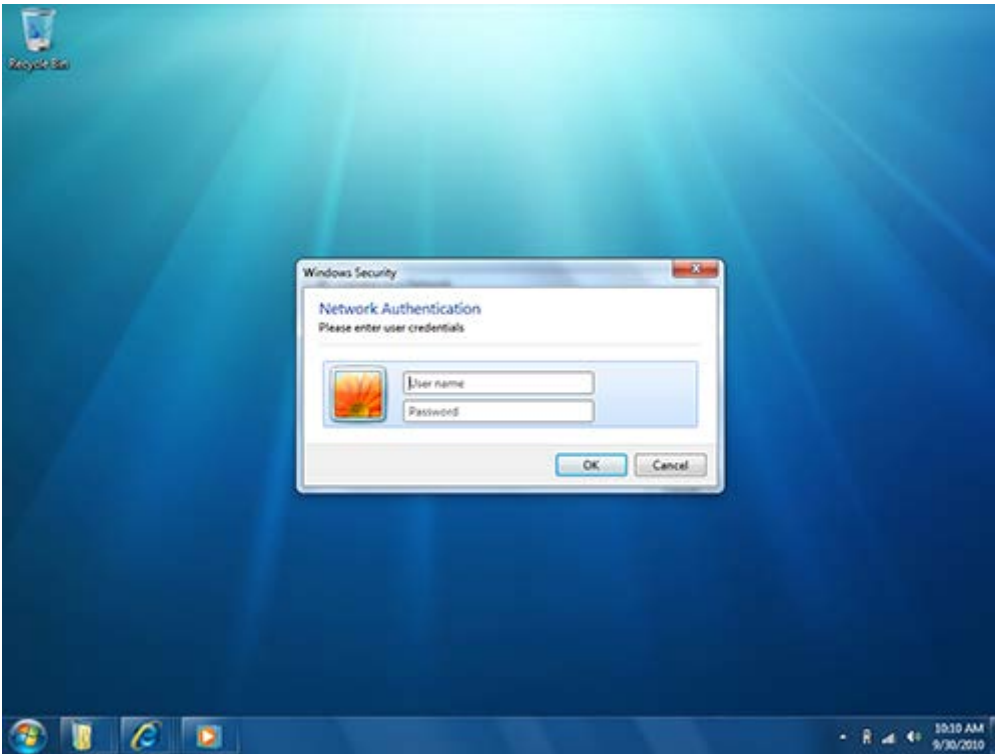
### 1. Select 'Singtel WiFi' network

Head down to any of our hotspot locations and select 'Singtel Wifi' network.



## 2. Sign in with your Singtel WiFi account

A pop-up will appear for you to enter your Username and Password. Use the Username and Password provided to you upon successful account activation



## 3. Start surfing with Singtel WiFi

Once your device is successfully configured, you are all set to enjoy our premium WiFi at any of our hotspot locations.

### **Do I have to configure my device every time I log in to Singtel WiFi?**

You only have to configure your device once, unless you have changed your password.

### **Why can't I connect?**

Make sure you have enabled WiFi in your device settings.

There may be another device connected to Singtel WiFi using the same user name. If you have another device connected to Singtel WiFi, other devices will not be able to access Singtel WiFi until you disconnect the first device.

# Windows 10

## 1. Select 'Singtel WiFi' network

Head down to any of our hotspot locations and select 'Singtel WiFi' network.



## 2. Sign in with your Singtel WiFi account

A pop-up will appear for you to enter your Username and Password. Use the Username and Password provided to you upon successful account activation



### **3. Start surfing with Singtel WiFi**

Once your device is successfully configured, you are all set to enjoy our premium WiFi at any of our hotspot locations.

#### **Do I have to configure my device every time I log in to Singtel WiFi?**

You only have to configure your device once, unless you have changed your password.

#### **Why can't I connect?**

Make sure you have enabled WiFi in your device settings.

There may be another device connected to Singtel WiFi using the same user name. If you have another device connected to Singtel WiFi, other devices will not be able to access Singtel WiFi until you disconnect the first device.

# Mac OS

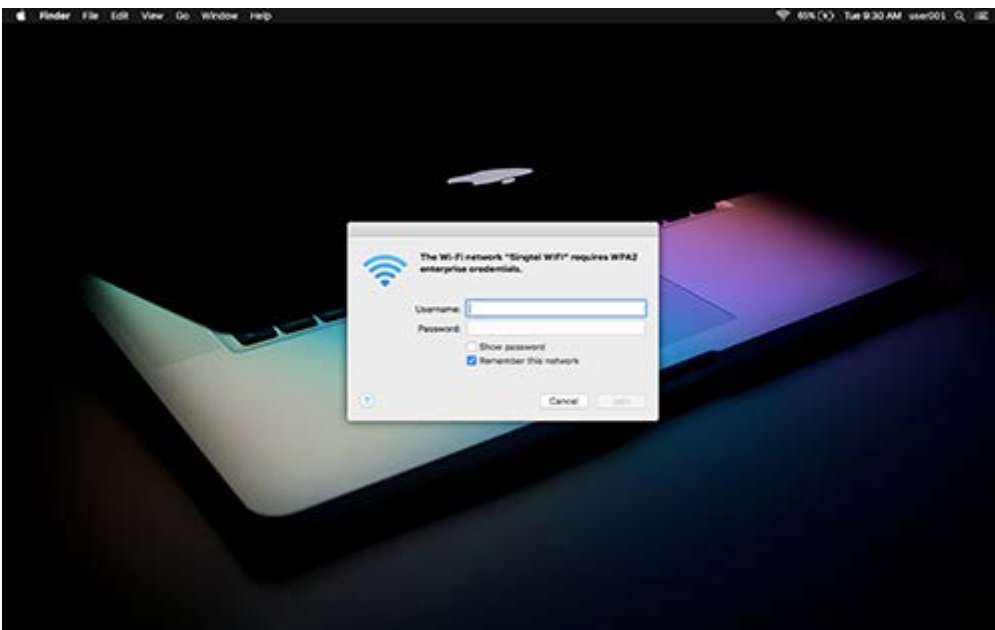
## 1. Select 'Singtel WiFi' network

Head down to any of our hotspot locations and select 'Singtel WiFi' network.



## 2. Sign in with your Singtel WiFi account

A pop-up will appear for you to enter your Username and Password. Use the Username and Password provided to you upon successful account activation



## 3. Start surfing with Singtel WiFi

Once your device is successfully configured, you are all set to enjoy our premium WiFi at any of our hotspot locations.

**Do I have to configure my device every time I log in to Singtel WiFi?**

You only have to configure your device once, unless you have changed your password.

**Why can't I connect?**

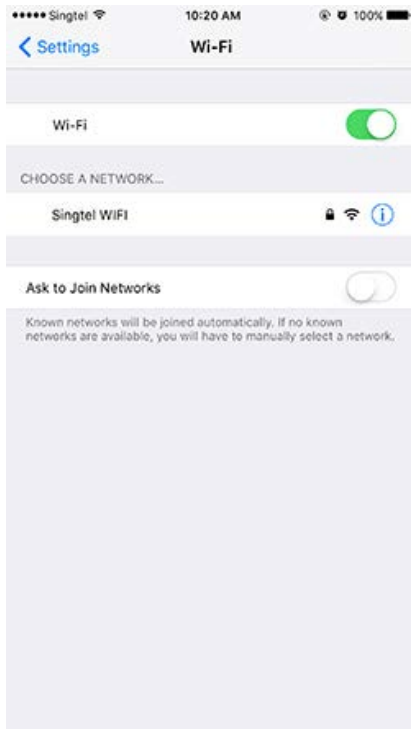
Make sure you have enabled WiFi in your device settings.

There may be another device connected to Singtel WiFi using the same user name. If you have another device connected to Singtel WiFi, other devices will not be able to access Singtel WiFi until you disconnect the first device.

# iOS

## 1. Select 'Singtel WiFi' network

Head down to any of our hotspot locations and select 'Singtel WiFi' network.



## 2. Sign in with your Singtel WiFi account

A pop-up will appear for you to enter your Username and Password. Use the Username and Password provided to you upon successful account activation.



### **3. Start surfing with Singtel WiFi**

Once your device is successfully configured, you are all set to enjoy our premium WiFi at any of our hotspot locations.

#### **Do I have to configure my device every time I log in to Singtel WiFi?**

You only have to configure your device once, unless you have changed your password.

#### **Why can't I connect?**

Make sure you have enabled WiFi in your device settings.

There may be another device connected to Singtel WiFi using the same user name. If you have another device connected to Singtel WiFi, other devices will not be able to access Singtel WiFi until you disconnect the first device.



# Android

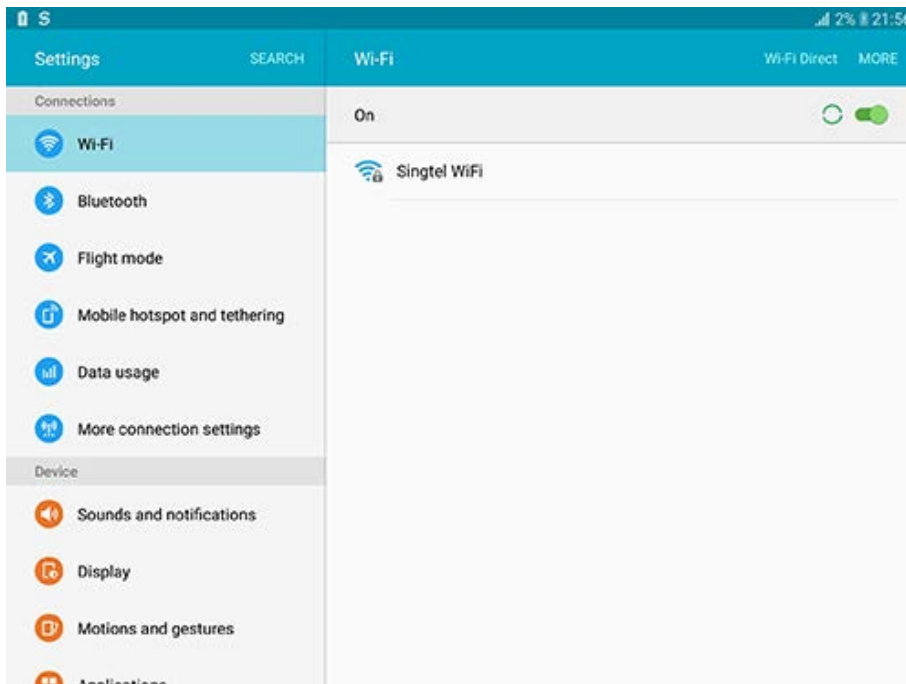
## 1. Select 'Singtel WiFi' network

Head down to any of our hotspot locations and select 'Singtel WiFi' network.



## 2. Sign in with your Singtel WiFi account

A pop-up will appear for you to enter your Username and Password. Use the Username and Password provided to you upon successful account activation



**What should I key in here?**

Make sure to select 'MSCHAPV2' for 'Phase 2 Authentication'.

Use the username and password provided to you upon successful account activation.

**3. Start surfing with Singtel WiFi**

Once your device is successfully configured, you are all set to enjoy our premium WiFi at any of our hotspot locations.

**Do I have to configure my device every time I log in to Singtel WiFi?**

You only have to configure your device once, unless you have changed your password.

**Why can't I connect?**

Make sure you have enabled WiFi in your device settings.

There may be another device connected to Singtel WiFi using the same user name. If you have another device connected to Singtel WiFi, other devices will not be able to access Singtel WiFi until you disconnect the first device.